

Power and Performance to Exercise, Condition and Rehabilitate



SWIMEx

Hydrotherapy Pools | Plunge Pools



why choose *SwimEx*?

The most versatile and powerful pools on the market for rehabilitation, recovery, and training.

Chosen by professionals worldwide as the ultimate in hydrotherapy. Harness the power of water for positive treatment and exercise outcomes.

SwimEx aquatic therapy machines with:

- Pool-wide laminar flow capable of circulating 25,000 gallons (94.635 liters) of water per minute in a smooth, river-like current.
- 99 water current speeds strong enough to treat the most competitive athlete or gentle enough for a frail patient.
- Extra deep water flow that acts as a second pair of hands to support patient during treatments.
- Multiple water depths to progress from acute rehab in non-weight bearing to weight bearing protocols.
- Wide water flow to access the current anywhere in the pool.
- Extremely smooth current to safely exercise and rehabilitate.
- Independent performance zones for core stabilization, range of motion exercises, and open and closed chain exercises.
- Treadmills, stairs, benches, water current area, and deep water zones for treating multiple patients in one session.
- Full range of standard sizes and depths, as well as customization options to meet specific treatment goals



Simply the most *versatile & powerful* Hydrotherapy Pool Available



built to last...easy to maintain

A Proud Heritage

With over half a century of experience bringing state-of-the-art fiberglass products to market, the SwimEx legacy is one of unparalleled quality.

SwimEx Goals:

- Unsurpassed construction quality
- The most powerful water current flow
- Successful hydrotherapy outcomes
- Superior customer service

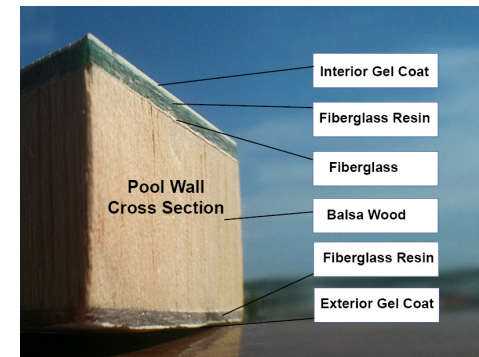
The Best Warranty in the Industry:

- 10 years on the structural integrity of the unit
- 5 years on the surface and paddlewheel

There's more to our warranty – please ask your sales agent for a copy.

Solid Fiberglass Construction = High Quality & Low Maintenance

Made from superior fiberglass composite, SwimEx pools have the same durable construction as high performance fiberglass boats. The SwimEx fiberglass process sandwiches a balsa wood core between layers of fiberglass and resin, with a Gelcoat finish that results in an indestructible pool wall that is built to last. (see *diagram*).

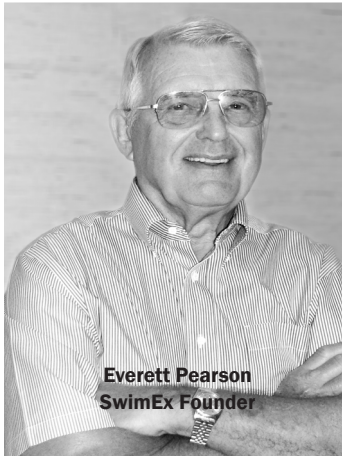


- SwimEx pools are free-standing for installation versatility.
- The balsa wood core provides insulation for superior temperature control.
- Gelcoat interior finish acts as a barrier against moisture absorption and inhibits algae growth.
- Interior walls clean easily and there are no liners to replace.
- All interior walking surfaces have a non-slip application for safe movement.
- Pool water can be virtually chemical-free with the SwimEx Ozonator and UV systems.



developed by **pioneers** in fiberglass

with the vision to see what's possible



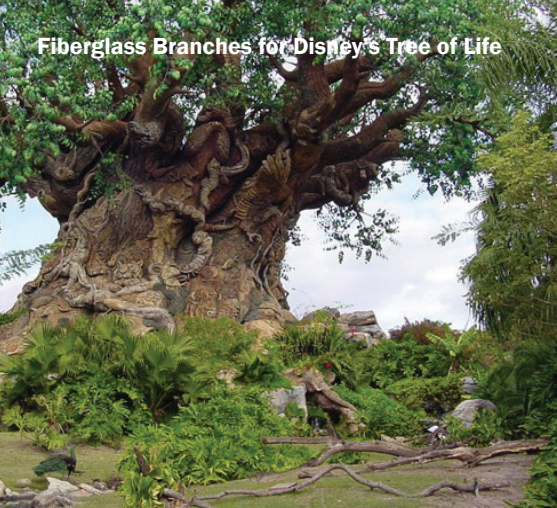
Fiberglass pioneer Everett Pearson was originally recognized for introducing the first fiberglass production sailboats with the company he co-founded in 1957 — Pearson Yachts. In 1986, Pearson bought the paddlewheel patents from two MIT engineers. He married his 30 years of design experience and fiberglass expertise with the paddlewheel technology and founded SwimEx.

For over 50 years, Pearson and his staff have been involved with top-of-the-line products, including J-Boat sailboats and the classic Alerion yachts. The Pearson family and staff have worked on a number of other 'next generation' products through their fiberglass-related companies such as bus and electric car prototypes, wind turbine blades and specialty fabrication projects for Disney theme parks.

SwimEx is now an independent, family-owned company run by the Pearson family.



Fiberglass Branches for Disney's Tree of Life



Fiberglass Prototype Bus



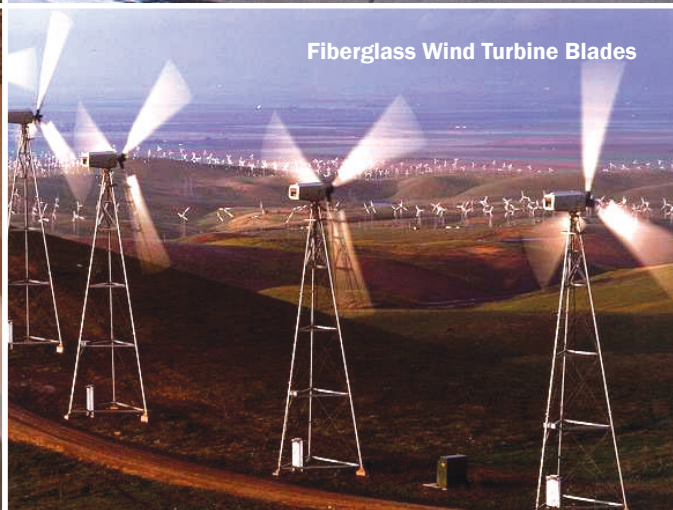
Fiberglass J-Boat Sailboats



Fiberglass Custom Plunge Pools



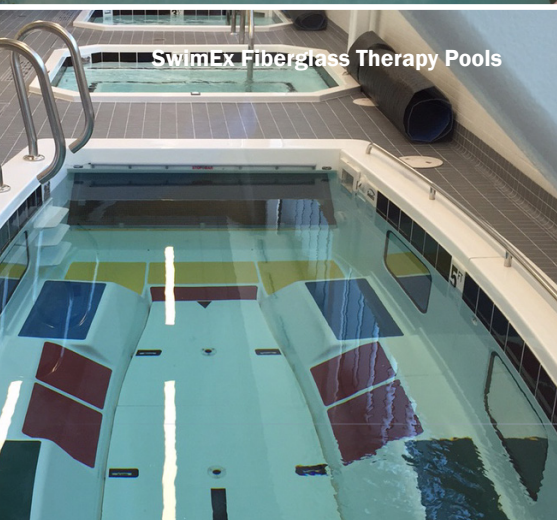
Fiberglass Wind Turbine Blades



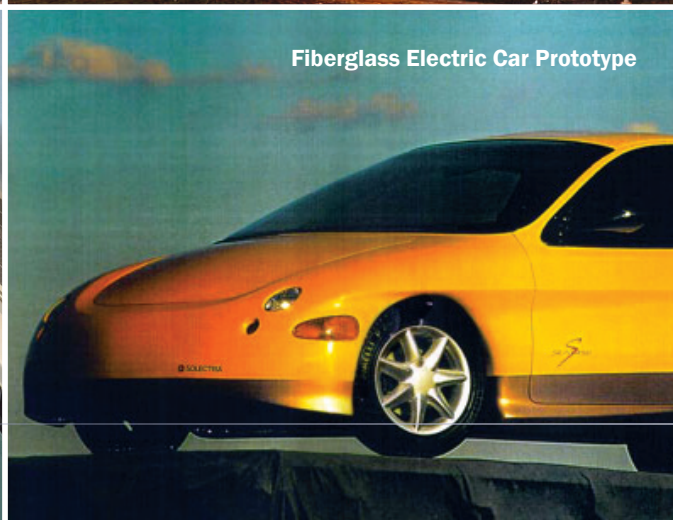
Fiberglass Hydrotherapy Pool



SwimEx Fiberglass Therapy Pools



Fiberglass Electric Car Prototype



Disney Test Track Cars with Fiberglass Body



benefits of using a SwimEx pool

"SwimEx sets the standard for aquatic fitness, recovery, and rehabilitation which is why they are the only choice for us. What impresses me is that their attention to detail extends from state building codes to 'brick & mortar'. SwimEx has stood by us well on every one of our projects with them. That is 'proof in the pudding' and speaks to why we have their hydrotherapy pool and three custom plunge pools in our facility."

Pepper Burruss, Director of
Sports Medicine,
Green Bay Packers

Proven outcomes of

AQUATIC THERAPY:

- Improved power, speed & agility
- Improved posture, alignment & stability
- Increased range of motion & flexibility
- Improved balance & coordination
- Reduced muscle pain & spasm
- Increased neurological stimulation
- Eases ambulation
- Reduced joint stress
- Improved muscle strength & endurance
- Reduced swelling

The Choice of Hospitals, Physical Therapists, Athletic Trainers and Veterinarians... EVERYWHERE!

SwimEx offers a complete isokinetic aquatic therapy workout, ideal for training, conditioning and injury rehabilitation. The deep, steady current, combined with built-in flexibility enables extremely tailored programs. Choose a model with wide open space to drop in your own workout tools such as a treadmill or cycle, or choose the versatility of inset floors and multiple workstations for targeted exercise. Create any protocol for any patient.

Physical Therapists trust SwimEx because patients feel safer, start therapy sooner, recover faster, and get the most out of their exercise.

Athletic Trainers use SwimEx to get athletes back in the game faster and keep them conditioned as they rehabilitate and exercise!

Key Benefits:

- Easy to set temperature controls
- Easy to regulate chemicals systems
- EDGE Monitor helps program workouts for interval training, measuring outcomes, and monitoring progress
- The small footprint requires only a 12' x 20' area (3.6m x 6.1m)
1000 T = 18' x 25' (5.5m x 7.3m)
- Easy to maintain and lower maintenance costs
- SwimEx Pools cost less to heat than full sized pools





models & features

Flat-Bottom Pools

Flat-Bottom pools offer wide open work areas and the flexibility to drop in equipment. Depending on depth chosen, a variety of non-weight bearing activities are possible.



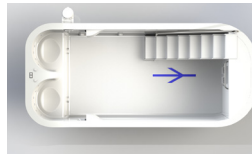
TRITON



480 T

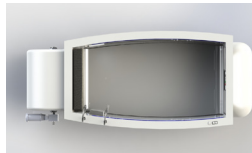


800 T



Triton

- Entry level price point
- Propeller water current
- Open work space with ability to add shallower depth or deep area
- 50" (1.27m) water depth
- Optional Integrated Treadmill
- One-piece design



400 OT and 480 T

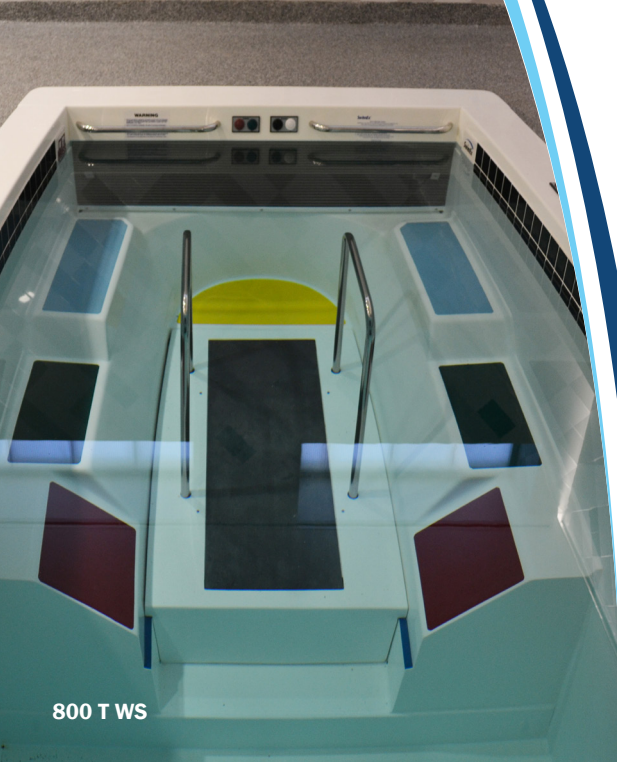
- Paddlewheel Water Current
- Open area to treat multiple patients at the same time
- 42" (1.1m) - 400 OT or 48" (1.2m) - 480 T water depth
- One piece (400 OT) and four-piece design (480 T)



800 T

- Paddlewheel Water Current
- Open work space with increased depth
- 66" (1.67m) water depth
- Customize floor depths
- Optional Integrated Treadmill
- Four-piece design
- Optional performance zone layout

**All four-piece pools can be assembled on-site or at the factory.*



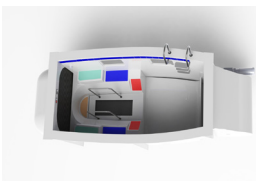
800 T WS



1000 T

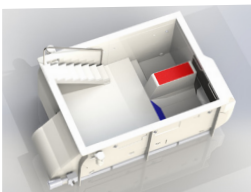
Combination Pools-Flat Bottom and Performance Zones

Combination pools enable you to customize size, depth and performance zones to work with your organization's needs.



800 T WS- SwimEx

- Open work space with increased depth
- 66" (1.67 m) water depth
- Customize floor depths
- Optional Integrated Treadmill
- Four-piece design
- Performance zone layout



1000 T - SwimEx Combination Pool

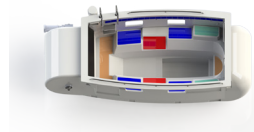
- Largest and most flexible model
- Water depths of 4', 5' and 6' (1.2m, 1.5m, 1.8m) all in this pool
- Deep well for complete unloading
- Flexible interior layouts to meet specific needs
- Angled running pad
- Stairs for additional exercises
- Exercise bench
- Open space for group classes
- Paddlewheel current on one side; still water on the other
- Increase the length from 2' - 8' (.6m - 2.4m) longer
- Add one or two optional integrated treadmills
- Optional zero-entry lift





Performance Zone Pools

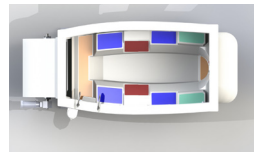
Workstation Pools are great for rehab and sports conditioning, and come standard with benches, running pad, angled plyo pads, floor inserts, and the option to add an integrated treadmill.



500 OT & 500 T

- Paddlewheel water current
- Smallest with the most versatility
- Multiple depths – 50", 38" and either 62" or 74" (1.27m, .96m, and either 1.57m or 1.87m)
- Workstations and angled running pad
- Integrated Treadmill can be added at 50" (1.27m) depth
- One piece and four-piece designs available

500 OT DW – adds deep well at either 62" or 74" (1.57m or 1.87m)



600 T & 600 T DW

- Paddlewheel water current
- Strongest water current
- Multiple depths – 60" and 48" (1.52m and 1.21m)
- Deeper current: 28" (.71m)
- Integrated Treadmill can be added at 48" (1.21m) depth
- Popular among college and pro sports teams
- Four-piece design



SwimEx Paddlewheel Current

The paddlewheel water system combines power and performance for the most advanced resistance current on the market. Designed by MIT engineers, the system pulls water to the rear of the pool, propels it through tunnels under the pool, then pushes it through a front grille.

Key Advantages:

- Paddlewheel delivers a pool-wide water current that is smooth, even, and deep.
- Circulates 25,000 gallons (94.635 liters) of water per minute. No other pool comes close.
- With 99 speeds, the water current is strong enough to challenge the most competitive athlete, yet gentle enough for a patient in acute recovery stages.



Choose
the
SwimEx
that fits
your site
and your
needs...

PLAN VIEW OF POOL AND WORKSTATIONS



TRITON

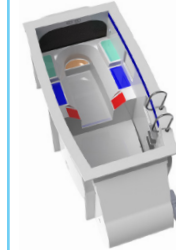
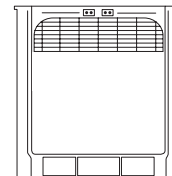
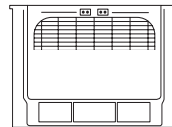
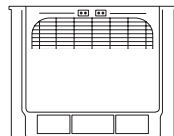


400 OT/ 480 T

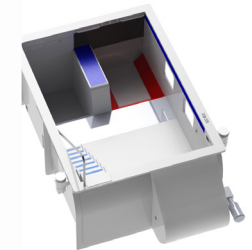


800 T

FLAT BOTTOM POOLS

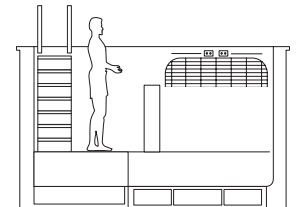
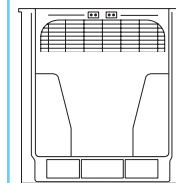


800 TWS



1000 T

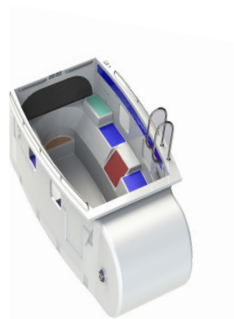
FLAT WITH ZONES



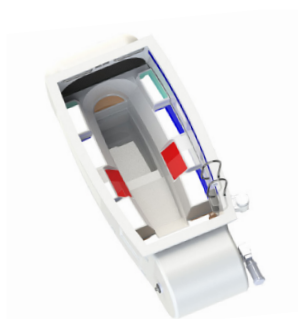
CROSS-SECTIONAL VIEW

MODELS	Triton	400 OT/480 T	800 T	800 TWS	1000 T
WORKSTATIONS	Yes	No	No	6 Zones	9 Zones
WATER DEPTHS	38", 50", 62" or 74"	42"/48"	42" - 60", 66"	42" - 60", 66"	48", 60", 72"
MINIMUM SPACE	240 sq. ft.	240 sq. ft.	240 sq. ft.	240 sq. ft.	450 sq. ft.
ADJUSTABLE DEPTH	Yes	No	Yes	Yes	Yes
DRIVE SYSTEM	5 hp	5 hp	7.5 hp	7.5 hp	7.5 hp
WATER DIMENSIONS	6' 3" x 11' 9"	6'3" x 11'9"	6' 3" x 11' 9"	6' 3" x 11' 9"	10' x 14'
TREADMILL AVAILABLE	No	No	Yes	Yes	Yes
DEPTH OF FLOW	18"	18"/28"	30"	30"	30"
EXTENSIONS	N/A	N/A/2' (max of 3)	3'	3'	2' (max of 4)
OVERALL DIMENSIONS (W x L x H)	7' 6" x 17' 6" x 6'	400 OT: 7'6"x 17'6"x 5' 480T: 7' 8" x 17' 7" x 5' 10"	7' 8" x 17' 6" x 7' 8"	7' 8" x 17' 6" x 7' 8"	11' 5" x 21' x 7'

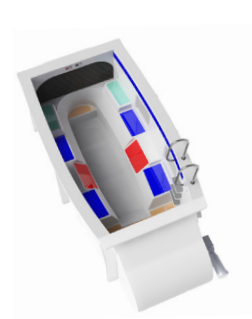




500 T/500 OT



500 OT DW

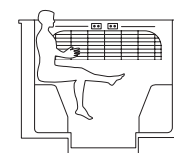
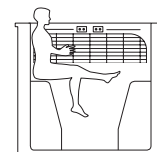
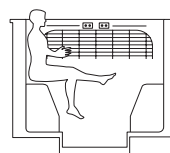
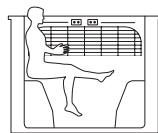


600 T



600 T DW

PERFORMANCE ZONE POOLS



MODELS	500 T/500 OT	500 OT DW	600 T	600 T DW
WORKSTATIONS	8 Zones	9 Zones	8 Zones	9 Zones
WATER DEPTHS	38", 50"	38", 50", 62" or 74"	48", 60"	48", 60", 72", or 84"
MINIMUM SPACE	240 sq. ft.	240 sq. ft.	240 sq. ft.	240 sq. ft.
ADJUSTABLE DEPTH	Yes	Yes	Yes	Yes
DRIVE SYSTEM	5 hp	5 hp	7.5 hp	7.5 hp
WATER DIMENSIONS	6' 3" x 11' 9"	6' 3" x 11' 9"	6' 3" x 11' 9"	6' 3" x 11' 9"
TREADMILL AVAILABLE	Yes	No	Yes	Yes
DEPTH OF FLOW	18"	18"	28"	28"
EXTENSIONS	N/A	N/A	2' (max of 3)	2' (max of 3)
OVERALL DIMENSIONS WxLxH	7' 6" x 17' 6" x 5'	7' 6" x 17' 6" x 6'	7' 8" x 17' 7" x 5' 10"	7' 8" x 17' 7" x 6' 6"

features & options

Have it your way with our standard features and custom options. We build each pool to your exact specifications to provide ultimate hydrotherapy pools and superior customer service.

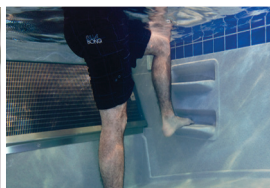
SwimEx features and options provide the greatest value and versatility.

Standard Features

Front & Side Handrails
for easy handholds.



Recessed Steps
for easy access.



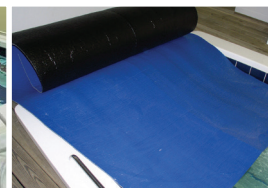
Tiles choose from many different colors of waterline tiles.



Underwater Viewing Windows help ensure proper form.



Floating Thermal Blanket
light-weight and energy efficient pool cover.



Rear Stop Bar stops the paddlewheel in an emergency.

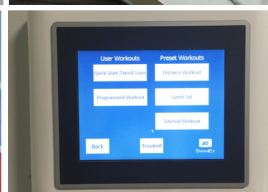


Air Buttons change water speeds easily while swimming or exercising.



Floor Inserts for a variety of water depths.

Aquatic Therapy DVD & Protocol Booklet
four-part exercise series in SwimEx pools and 32 sample protocols for the most common injuries.



EDGE Monitor
Touchscreen monitor with pre-programmed training routines, swimming workouts, and the capability to custom program your own.



Technical & Educational In-Service offered at your facility upon installation completion.

Options Available

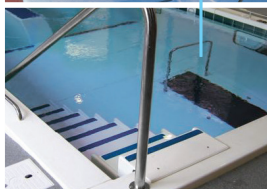
Massage Jets

A triangle of three jets in four locations for added therapy.



Massage Wand

for targeted therapy.



Fiberglass Entry Stairs with Handrail (included with 1000 T) allow for easier access in and out of the pool, complete with one stainless steel handrail.

Personalized Logo

for floor Inserts and waterline tiles.



Stainless Steel Stabilization Bar crossing the width of the pool, to assist patients with balance and stability if they cannot reach the sides.



Underwater LED Lights

add better visibility with two lights on the side of your choice.

Underwater Video Camera

for detailed review of therapy performance.

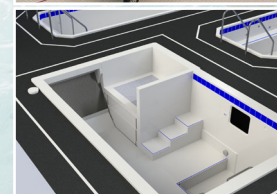
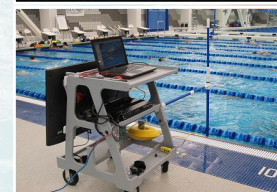
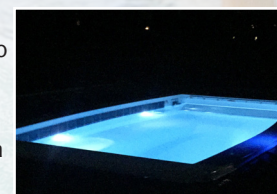
Zero Entry Lift

for treatment of non-ambulatory patients.

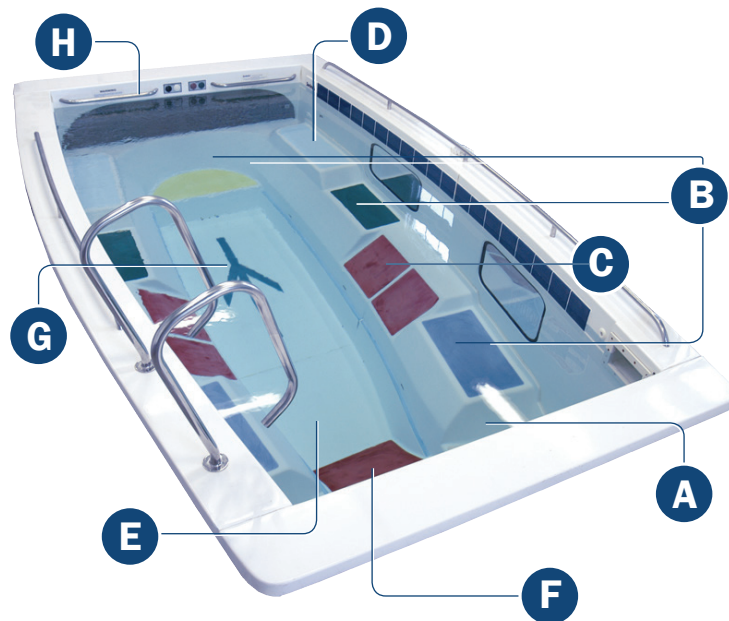
Gas Heater (natural or propane, not pictured) in lieu of electric.

7.5 HP Drive System (not pictured) more power lets you reach higher water speeds.

Ozonator or Water UV Systems (not pictured) for crystal clear water while reducing the need for chemicals by 80%.



Performance Zones



Zone A

A 15" (.38m) high closed-chain exercise area for medium range stepping activities, proprioception exercises, or as a plyometric platform.

Zone B

Various height multi-purpose platforms for step-ups and plyometric activities to meet your clients' needs.



Zone C

Platform angled at 45° for plyometric and proprioceptive training.

Zone E

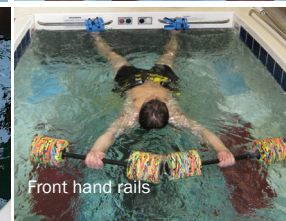
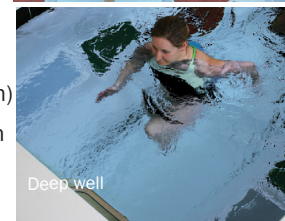
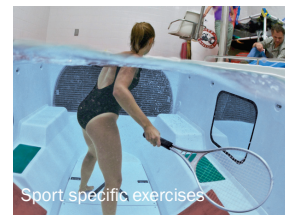
Open floor area for traditional closed-chain exercises and core stabilization.

Zone G

Deep well adds 12" (.3m) or 24" (.6m) water depth for non-weight bearing activities.

Zone I

The unique feature of the SwimEx hydrotherapy machines is a variable laminar flow adjustable to 99 different speeds. This current adds an extra dimension to treatment protocols for increased versatility.



Zone D

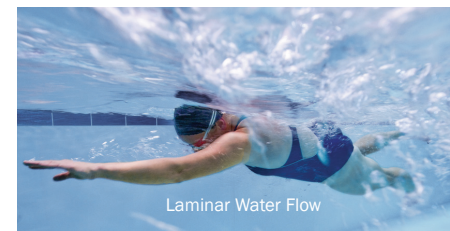
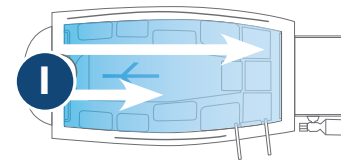
16" (.4m) deep multi-purpose bench for seated open-chain shoulder, knee or ankle exercises.

Zone F

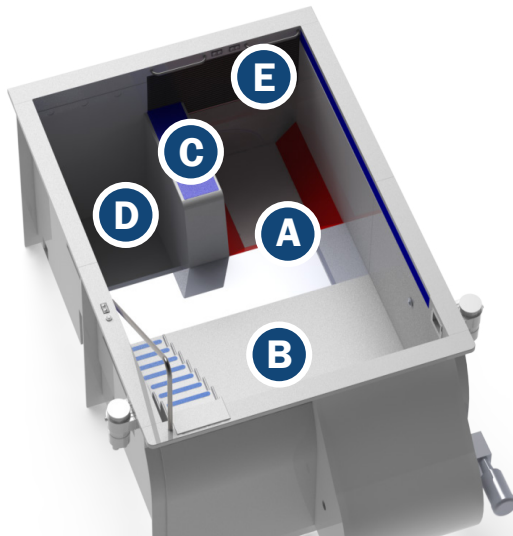
40° angled pad for running form and core stabilization.

Zone H

Front hand rails for different upper body exercises and traction.



SwimEx 1000T Exercise Stations



A Various height **multi-purpose platforms** for step-ups and plyometric activities for successful outcomes.



B **Main treatment area** has a 48" (1.2m) water depth, ideal for individual treatments or group activities.



C **24" (.6m) multi-purpose bench** for seated open chain shoulder, knee or ankle exercise.



D **60" (1.5m) deep work area**, for decreased weight bearing exercises.



E **Front hand rails** for a variety of different upper body exercises & traction.



F **Powerful Paddlewheel** current adjustable to 99 different speeds.



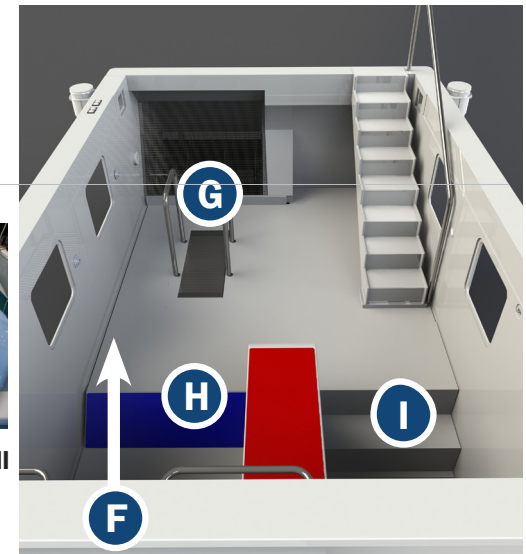
G Optional **integrated treadmills** for additional power and performance.



H **40° pad** for core stabilization and running.



I **72" (1.8m) deep well** for non-weight bearing protocols.



The Best Hot & Cold Plunge Pools

SwimEx plunge pools create the ultimate recovery and rehabilitation environment.

The modular design is ideal for locker rooms or hydrotherapy rooms. With new construction or remodeling projects, SwimEx plunge pools exceed expectations.

SwimEx Plunge Pool Advantages:

- Solid fiberglass construction with a balsa wood core for superior temperature retention.
- Gelcoat interior for easy maintenance and cleaning.
- Custom tile and color options to match specific colors and logos.
- Pre-plumbed with spa jets, a cover, filtration system, and heater or chiller.
- Self-supporting for in-ground or above ground installation.
- Four basic sizes or customize your own.
- Main floor drains for easy cleaning and maintenance.
- Custom layouts and size options available.



*Sectional designs are available for tight installations.



Plunge Pools

Benefits:

- Bottom drains for full draining
- Quick cleaning Gelcoat surface
- Variable seating options
- Solid fiberglass construction
- Superior temperature retention
- Insulated for lower utility costs
- Variable interior layouts
- Custom color and accent tiles
- Custom logo and team tiles



Cold Plunge Pools help minimize muscle inflammation to gain the beneficial outcomes of exercise with faster recovery times in between practices and less pain after workouts. The SwimEx chiller keeps water at a therapeutic 50°F (10°C).

Hot Plunge Pools help increase blood flow, flexibility, and loosen muscles to minimize muscle strain during practice for more productive sessions. They are ideal for soothing sore muscles. The SwimEx heater brings water to 104°F (40°C).

Sectional Plunge Pools are available in all SwimEx plunge pool models and designed specifically for easy access into tight spaces. They are ideal for existing facilities, post construction and pre-existing rooms.

Sizing Options & Specifications

Sizes

Small

Medium

Large

Extra Large

Custom

Dimensions

7'9" x 7'9" x 56.5"

7'9" x 9' x 56.5"

7'9" x 12' x 56.5"

7'9" x 14' x 56.5"

Up to 46' Long

Water Depth

3'6"

3'6"

3'6"

3'6"

3'6"







Phases of Installation

expert help every step of the way

Getting Started

From your first inquiry through choosing options, design and installation, you get the best service in the industry. We can assist you during the planning and decision-making process, when you are ready to install, and after installation with yearly service and maintenance. Our field technicians will guide you and your contractors with space layouts, CAD drawings, technical information and installation details.

Hassle-Free Installation

SwimEx pools can be installed indoors, outdoors, above ground, in-ground or partially in-ground. What's more, a SwimEx is free-standing and moveable; additional support is not required. Our one-piece seamless design means no assembly required, great for new construction and open installations. For easy access into existing space, choose from our four-piece designs assembled on-site. If access is not an issue, you can choose to have them assembled in the factory.

Most SwimEx pools require 200-240 sq. ft. (18.6-22.3 sq. m.) of space (1000 T requires 450 sq. ft., or 41.8 sq. m.), and a pit or flat-level concrete slab. The standard pit area is 12' x 20' (3.66 m x 6.1 m) (18' x 25' [5.49 m x 7.62 m] for the 1000 T) including a drain or sump pump. On average, the electrical service needed is 125 Amps, 208-240V single-phase. Your pool arrives pre-plumbed, needing only simple PVC connections.



client *testimonials*

“It’s a huge factor in why people come here. Out of 400 visits per month, aquatic rehab is sixty to seventy percent of our patients. Our usage has exceeded projections and we’re very busy – it’s a better investment than we had thought. Given our caseload, I’d say we’re on track to pay off the pool in half the time we projected.” – **Barb Engberg, PT, and Beth Barnesberger, PT | Live Well | Grand Island, NE**

“We selected SwimEx based on tradition and the success I know other athletic trainers and athletes have had with the pool. We looked at the competition, but all it had to offer was a treadmill. With SwimEx, I can get multiple depths, a variety of workstations – just a lot more.” – **Darryl Conway, ATC, Director of Sports Medicine, University of Maryland**

“We have had tremendous results in treating our athletes in the SwimEx pool. Not only has it helped speed the recovery of America’s injured athletes, it also offers tremendous benefits in athletic training. Many of our athletes run and swim against the current, which gives them an incredible workout.” – **Mr. Bob Beetan | Director of Sports Medicine | United States Olympic Committee**

“After we purchased it, they sent experts out to train us how to use it and made technology real to us as far as possibilities with rehab and physical conditioning. They gave us a bunch of ideas we hadn’t thought of before. Its use is limited only by our imagination. The color coded stations make it easy for my men’s soccer players with hip injuries to do plyometrics and for others to do explosive drill movements from different height platforms. Right now I’m using it to treat a basketball player with a herniated disc in a treatment I made up that I call ‘traction.’ I hook his feet under the hand rails and turn the current on, which pushes him away from the wall into a weightless stretch, supported by the water and a pair of water wings. So there’s no pressure on the disc and we can get some separation. I can’t do that on the table.” – **Jonathan Burch, Asst. Athletic Director | Sports Medicine | St. Louis University**

After researching aquatic therapy pools, the decision to select SwimEx was simple. Their pools require the least amount of maintenance in addition to offering the widest array of rehabilitation and conditioning options for our athletes. In addition, we were able to work with them on a custom appearance design allowing the pools to be a showpiece for our facility. We are very pleased with our purchase of SwimEx pools.” – **Bob Howard, ATC | Head Athletic Trainer | University of Connecticut**

“SwimEx has played an extremely important role in my early recovery from a broken ankle! Before I could bear weight, I was able to build my muscles and stay in shape through the resistance from the underwater current...with the help of SwimEx and my wonderful physical therapist Preston Hall, I will be back playing volleyball more quickly than I thought to be possible!” – **Kristi (pictured right) | Patient at MountainTop PT | Park City Utah**

“The SwimEx allowed us to be a lot more progressive in Kristi’s treatment, which meant she could return to the team in time for volleyball season.” – **Preston Hall (pictured right) | PT Owner MountainTop PT | Park City Utah**





SwimEx

READ BEFORE USING:
WARNING: THIS PRODUCT IS DESIGNED FOR PERSONS UNDER 180 LBS AND
UNDER 6'6". IT MAY CAUSE INJURY IF USED BY A PERSON
WEIGHING MORE THAN 180 LBS OR TALLER THAN 6'6".
USE AT YOUR OWN RISK.

1. GOGGLES MUST BE WORN AT ALL TIMES
2. DO NOT USE IF YOU HAVE A MEDICAL CONDITION OR ARE TAKING MEDICATION
3. DO NOT USE IF YOU ARE PREGNANT OR BREASTFEEDING
4. DO NOT USE IF YOU HAVE A HISTORY OF EPILEPSY OR SEIZURES
5. DO NOT USE IF YOU HAVE A HISTORY OF HEART DISEASE OR HIGH BLOOD PRESSURE
6. DO NOT USE IF YOU HAVE A HISTORY OF STROKE OR OTHER NEUROLOGICAL CONDITIONS
7. DO NOT USE IF YOU HAVE A HISTORY OF DEMENTIA OR OTHER COGNITIVE DISORDERS
8. DO NOT USE IF YOU HAVE A HISTORY OF ADD, ADHD, OR OTHER PSYCHIATRIC CONDITIONS
9. DO NOT USE IF YOU HAVE A HISTORY OF SUBSTANCE USE OR ADDICTION
10. DO NOT USE IF YOU HAVE A HISTORY OF SELF-HARM OR SUICIDAL THOUGHTS
11. DO NOT USE IF YOU HAVE A HISTORY OF EATING DISORDERS
12. DO NOT USE IF YOU HAVE A HISTORY OF OBSESSIVE COMPULSIVE DISORDER
13. DO NOT USE IF YOU HAVE A HISTORY OF PHOBIC DISORDERS
14. DO NOT USE IF YOU HAVE A HISTORY OF ANXIETY DISORDERS
15. DO NOT USE IF YOU HAVE A HISTORY OF DEPRESSION
16. DO NOT USE IF YOU HAVE A HISTORY OF BIPOLAR DISORDER
17. DO NOT USE IF YOU HAVE A HISTORY OF SCHIZOPHRENIA
18. DO NOT USE IF YOU HAVE A HISTORY OF PSYCHOTIC DISORDERS
19. DO NOT USE IF YOU HAVE A HISTORY OF PERSONALITY DISORDERS
20. DO NOT USE IF YOU HAVE A HISTORY OF BORDERLINE PERSONALITY DISORDER
21. DO NOT USE IF YOU HAVE A HISTORY OF ANTISOCIAL PERSONALITY DISORDER
22. DO NOT USE IF YOU HAVE A HISTORY OF NARCISSISTIC PERSONALITY DISORDER
23. DO NOT USE IF YOU HAVE A HISTORY OF HISTRIONIC PERSONALITY DISORDER
24. DO NOT USE IF YOU HAVE A HISTORY OF BORDERLINE PERSONALITY DISORDER
25. DO NOT USE IF YOU HAVE A HISTORY OF ANTISOCIAL PERSONALITY DISORDER
26. DO NOT USE IF YOU HAVE A HISTORY OF NARCISSISTIC PERSONALITY DISORDER
27. DO NOT USE IF YOU HAVE A HISTORY OF HISTRIONIC PERSONALITY DISORDER
28. DO NOT USE IF YOU HAVE A HISTORY OF BORDERLINE PERSONALITY DISORDER
29. DO NOT USE IF YOU HAVE A HISTORY OF ANTISOCIAL PERSONALITY DISORDER
30. DO NOT USE IF YOU HAVE A HISTORY OF NARCISSISTIC PERSONALITY DISORDER
31. DO NOT USE IF YOU HAVE A HISTORY OF HISTRIONIC PERSONALITY DISORDER
32. DO NOT USE IF YOU HAVE A HISTORY OF BORDERLINE PERSONALITY DISORDER
33. DO NOT USE IF YOU HAVE A HISTORY OF ANTISOCIAL PERSONALITY DISORDER
34. DO NOT USE IF YOU HAVE A HISTORY OF NARCISSISTIC PERSONALITY DISORDER
35. DO NOT USE IF YOU HAVE A HISTORY OF HISTRIONIC PERSONALITY DISORDER
36. DO NOT USE IF YOU HAVE A HISTORY OF BORDERLINE PERSONALITY DISORDER
37. DO NOT USE IF YOU HAVE A HISTORY OF ANTISOCIAL PERSONALITY DISORDER
38. DO NOT USE IF YOU HAVE A HISTORY OF NARCISSISTIC PERSONALITY DISORDER
39. DO NOT USE IF YOU HAVE A HISTORY OF HISTRIONIC PERSONALITY DISORDER
40. DO NOT USE IF YOU HAVE A HISTORY OF BORDERLINE PERSONALITY DISORDER
41. DO NOT USE IF YOU HAVE A HISTORY OF ANTISOCIAL PERSONALITY DISORDER
42. DO NOT USE IF YOU HAVE A HISTORY OF NARCISSISTIC PERSONALITY DISORDER
43. DO NOT USE IF YOU HAVE A HISTORY OF HISTRIONIC PERSONALITY DISORDER
44. DO NOT USE IF YOU HAVE A HISTORY OF BORDERLINE PERSONALITY DISORDER
45. DO NOT USE IF YOU HAVE A HISTORY OF ANTISOCIAL PERSONALITY DISORDER
46. DO NOT USE IF YOU HAVE A HISTORY OF NARCISSISTIC PERSONALITY DISORDER
47. DO NOT USE IF YOU HAVE A HISTORY OF HISTRIONIC PERSONALITY DISORDER
48. DO NOT USE IF YOU HAVE A HISTORY OF BORDERLINE PERSONALITY DISORDER
49. DO NOT USE IF YOU HAVE A HISTORY OF ANTISOCIAL PERSONALITY DISORDER
50. DO NOT USE IF YOU HAVE A HISTORY OF NARCISSISTIC PERSONALITY DISORDER
51. DO NOT USE IF YOU HAVE A HISTORY OF HISTRIONIC PERSONALITY DISORDER
52. DO NOT USE IF YOU HAVE A HISTORY OF BORDERLINE PERSONALITY DISORDER
53. DO NOT USE IF YOU HAVE A HISTORY OF ANTISOCIAL PERSONALITY DISORDER
54. DO NOT USE IF YOU HAVE A HISTORY OF NARCISSISTIC PERSONALITY DISORDER
55. DO NOT USE IF YOU HAVE A HISTORY OF HISTRIONIC PERSONALITY DISORDER
56. DO NOT USE IF YOU HAVE A HISTORY OF BORDERLINE PERSONALITY DISORDER
57. DO NOT USE IF YOU HAVE A HISTORY OF ANTISOCIAL PERSONALITY DISORDER
58. DO NOT USE IF YOU HAVE A HISTORY OF NARCISSISTIC PERSONALITY DISORDER
59. DO NOT USE IF YOU HAVE A HISTORY OF HISTRIONIC PERSONALITY DISORDER
60. DO NOT USE IF YOU HAVE A HISTORY OF BORDERLINE PERSONALITY DISORDER
61. DO NOT USE IF YOU HAVE A HISTORY OF ANTISOCIAL PERSONALITY DISORDER
62. DO NOT USE IF YOU HAVE A HISTORY OF NARCISSISTIC PERSONALITY DISORDER
63. DO NOT USE IF YOU HAVE A HISTORY OF HISTRIONIC PERSONALITY DISORDER
64. DO NOT USE IF YOU HAVE A HISTORY OF BORDERLINE PERSONALITY DISORDER
65. DO NOT USE IF YOU HAVE A HISTORY OF ANTISOCIAL PERSONALITY DISORDER
66. DO NOT USE IF YOU HAVE A HISTORY OF NARCISSISTIC PERSONALITY DISORDER
67. DO NOT USE IF YOU HAVE A HISTORY OF HISTRIONIC PERSONALITY DISORDER
68. DO NOT USE IF YOU HAVE A HISTORY OF BORDERLINE PERSONALITY DISORDER
69. DO NOT USE IF YOU HAVE A HISTORY OF ANTISOCIAL PERSONALITY DISORDER
70. DO NOT USE IF YOU HAVE A HISTORY OF NARCISSISTIC PERSONALITY DISORDER
71. DO NOT USE IF YOU HAVE A HISTORY OF HISTRIONIC PERSONALITY DISORDER
72. DO NOT USE IF YOU HAVE A HISTORY OF BORDERLINE PERSONALITY DISORDER
73. DO NOT USE IF YOU HAVE A HISTORY OF ANTISOCIAL PERSONALITY DISORDER
74. DO NOT USE IF YOU HAVE A HISTORY OF NARCISSISTIC PERSONALITY DISORDER
75. DO NOT USE IF YOU HAVE A HISTORY OF HISTRIONIC PERSONALITY DISORDER
76. DO NOT USE IF YOU HAVE A HISTORY OF BORDERLINE PERSONALITY DISORDER
77. DO NOT USE IF YOU HAVE A HISTORY OF ANTISOCIAL PERSONALITY DISORDER
78. DO NOT USE IF YOU HAVE A HISTORY OF NARCISSISTIC PERSONALITY DISORDER
79. DO NOT USE IF YOU HAVE A HISTORY OF HISTRIONIC PERSONALITY DISORDER
80. DO NOT USE IF YOU HAVE A HISTORY OF BORDERLINE PERSONALITY DISORDER
81. DO NOT USE IF YOU HAVE A HISTORY OF ANTISOCIAL PERSONALITY DISORDER
82. DO NOT USE IF YOU HAVE A HISTORY OF NARCISSISTIC PERSONALITY DISORDER
83. DO NOT USE IF YOU HAVE A HISTORY OF HISTRIONIC PERSONALITY DISORDER
84. DO NOT USE IF YOU HAVE A HISTORY OF BORDERLINE PERSONALITY DISORDER
85. DO NOT USE IF YOU HAVE A HISTORY OF ANTISOCIAL PERSONALITY DISORDER
86. DO NOT USE IF YOU HAVE A HISTORY OF NARCISSISTIC PERSONALITY DISORDER
87. DO NOT USE IF YOU HAVE A HISTORY OF HISTRIONIC PERSONALITY DISORDER
88. DO NOT USE IF YOU HAVE A HISTORY OF BORDERLINE PERSONALITY DISORDER
89. DO NOT USE IF YOU HAVE A HISTORY OF ANTISOCIAL PERSONALITY DISORDER
90. DO NOT USE IF YOU HAVE A HISTORY OF NARCISSISTIC PERSONALITY DISORDER
91. DO NOT USE IF YOU HAVE A HISTORY OF HISTRIONIC PERSONALITY DISORDER
92. DO NOT USE IF YOU HAVE A HISTORY OF BORDERLINE PERSONALITY DISORDER
93. DO NOT USE IF YOU HAVE A HISTORY OF ANTISOCIAL PERSONALITY DISORDER
94. DO NOT USE IF YOU HAVE A HISTORY OF NARCISSISTIC PERSONALITY DISORDER
95. DO NOT USE IF YOU HAVE A HISTORY OF HISTRIONIC PERSONALITY DISORDER
96. DO NOT USE IF YOU HAVE A HISTORY OF BORDERLINE PERSONALITY DISORDER
97. DO NOT USE IF YOU HAVE A HISTORY OF ANTISOCIAL PERSONALITY DISORDER
98. DO NOT USE IF YOU HAVE A HISTORY OF NARCISSISTIC PERSONALITY DISORDER
99. DO NOT USE IF YOU HAVE A HISTORY OF HISTRIONIC PERSONALITY DISORDER
100. DO NOT USE IF YOU HAVE A HISTORY OF BORDERLINE PERSONALITY DISORDER

SwimEx



390 Airport Rd
Fall River MA 02720

TELEPHONE
508.646.1600

TOLL FREE
800.877.7946

FACSIMILE
508.675.0525

E-MAIL
sales@swimex.com

WEBSITE
www/swimex.com