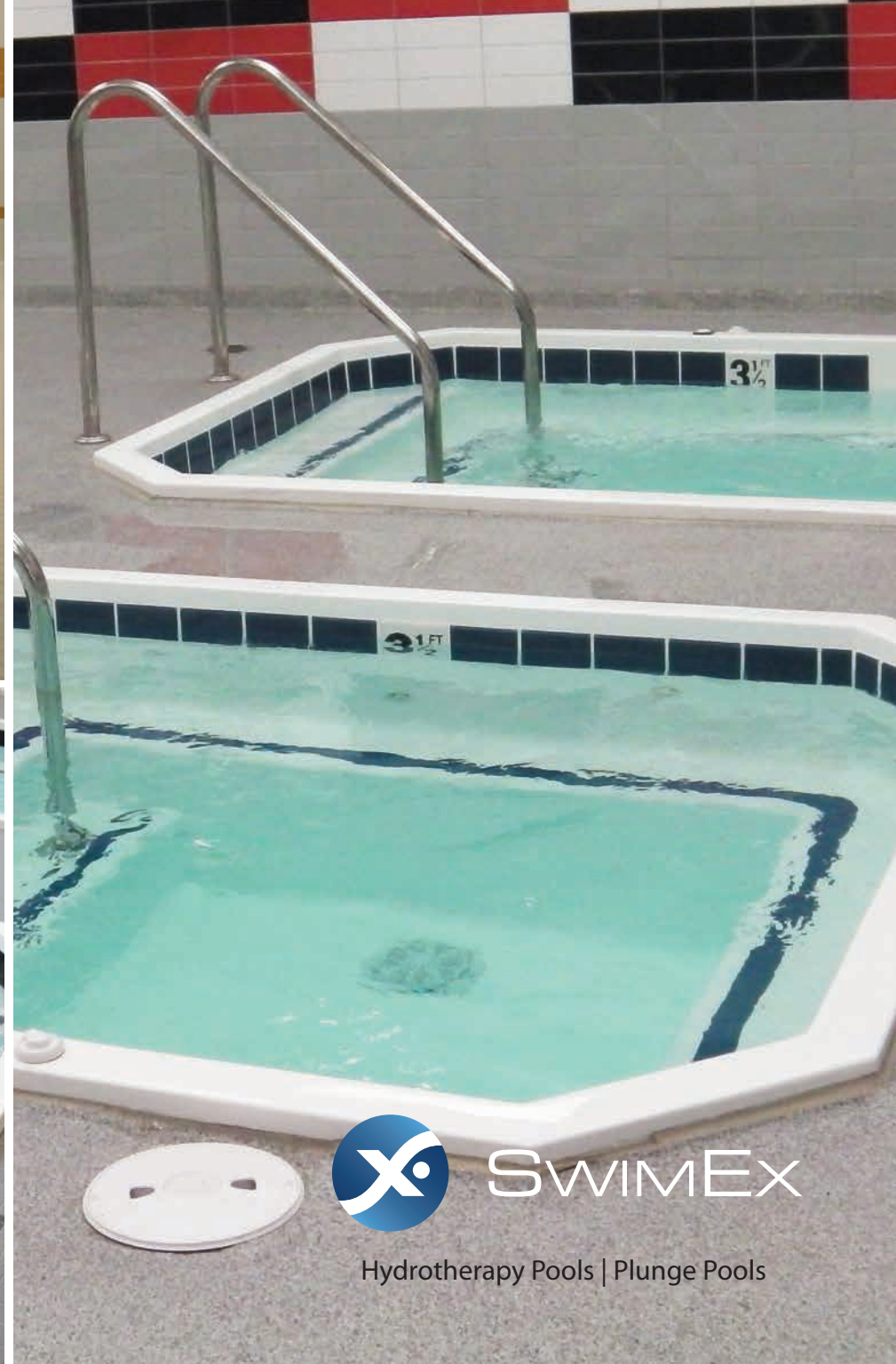


Hot and Cold Plunge Pools. Rehabilitate. Recover. Relax.



SWIMEX

Hydrotherapy Pools | Plunge Pools



# *built to last...* easy to maintain

## A Proud Heritage

With over half a century of experience bringing state-of-the-art fiberglass products to market, the SwimEx legacy is one of unparalleled quality.

## SwimEx Goals:

- Unsurpassed construction quality
- The most advanced water current
- Successful hydrotherapy outcomes
- Superior customer service

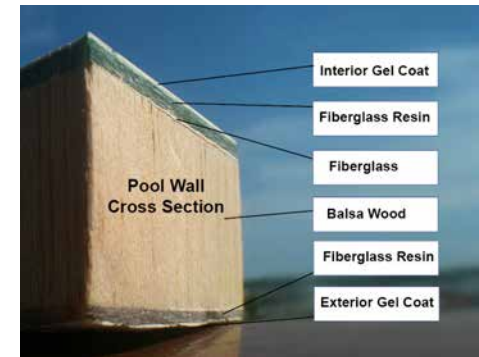
## The Best Warranty in the Industry:

- 10 years on the structural integrity of the unit
- 5 years on the Gelcoat

*There's more to our warranty – please ask your sales agent for a copy.*

## Solid Fiberglass Construction = High Quality & Low Maintenance

Made from superior fiberglass composite, SwimEx plunge pools have the same durable construction as high performance fiberglass boats. The SwimEx fiberglass process sandwiches a balsa wood core between layers of fiberglass and resin, with a Gelcoat finish that results in an indestructible pool wall that is built to last. *(see diagram).*



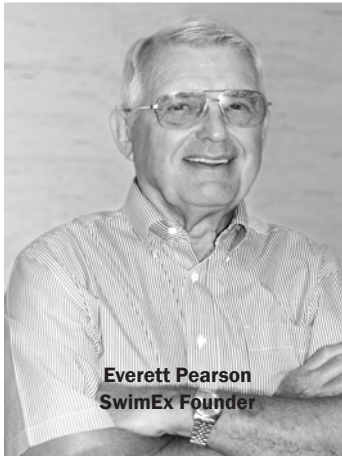
- SwimEx plunge pools are free-standing for installation versatility.
- The balsa wood core provides insulation for superior temperature control.
- Gelcoat interior finish acts as a barrier against moisture absorption and inhibits algae growth.
- Interior walls clean easily and there are no liners to replace.
- Bottom drains for easy cleaning and maintenance.





# *developed by* **pioneers** in fiberglass

with the vision to see what's possible



Fiberglass pioneer Everett Pearson was originally recognized for introducing the first fiberglass production sailboats with the company he co-founded in 1957 — Pearson Yachts. In 1986, Pearson bought the paddlewheel patents from two MIT engineers. He married his 30 years of design experience and fiberglass expertise with the paddlewheel technology and founded SwimEx.

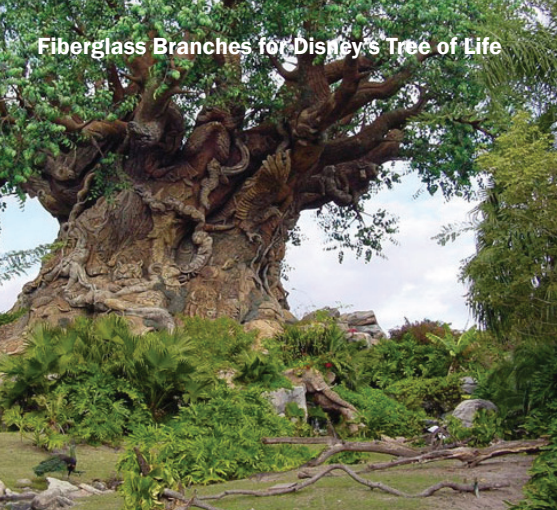
For over 50 years, Pearson and his staff have been involved with top-of-the-line products, including J-Boat sailboats and the classic Alerion yachts. The Pearson family and staff have worked on a number of other 'next generation' products through their fiberglass-related companies such as bus and electric car prototypes, wind turbine blades and specialty fabrication projects for Disney theme parks.

SwimEx is now an independent, family-owned company run by the Pearson family.





Fiberglass Branches for Disney's Tree of Life



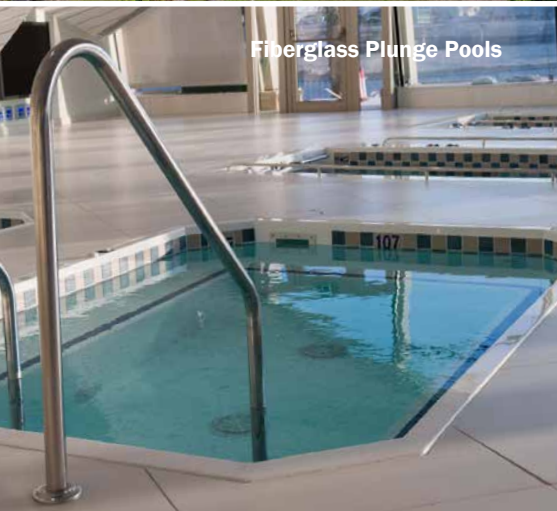
Fiberglass Prototype Bus



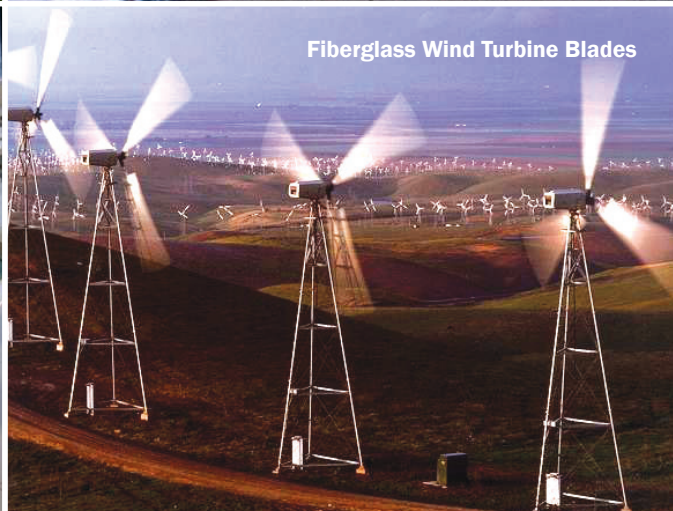
Fiberglass J-Boat Sailboats



Fiberglass Plunge Pools



Fiberglass Wind Turbine Blades



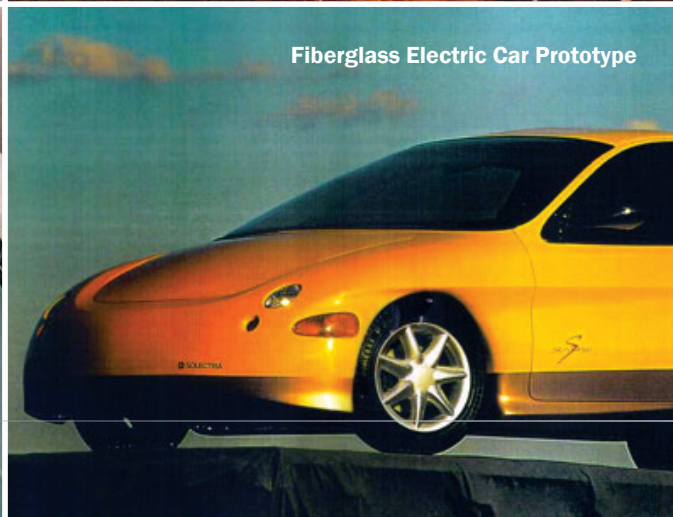
Fiberglass Hydrotherapy Pools



SwimEx Fiberglass Therapy Pools



Fiberglass Electric Car Prototype



Disney Test Track Cars with Fiberglass Body





# The Best Hot & Cold Plunge Pools

SwimEx plunge pools create the ultimate recovery and rehabilitation environment.

The modular design is ideal for locker rooms or hydrotherapy rooms. With new construction or remodeling projects, SwimEx plunge pools exceed expectations.

## SwimEx Plunge Pool Advantages:

- Solid fiberglass construction with a balsa wood core for superior temperature retention.
- Gelcoat interior for easy maintenance and cleaning.
- Custom tile and color options to match specific colors and logos.
- Pre-plumbed with spa jets, a cover, filtration system, and heater or chiller.
- Self-supporting for in-ground or above ground installation.
- Four basic sizes or customize your own.
- Main floor drains for easy cleaning and maintenance.
- Custom layouts and size options available.



\*Sectional designs are available for tight installations.

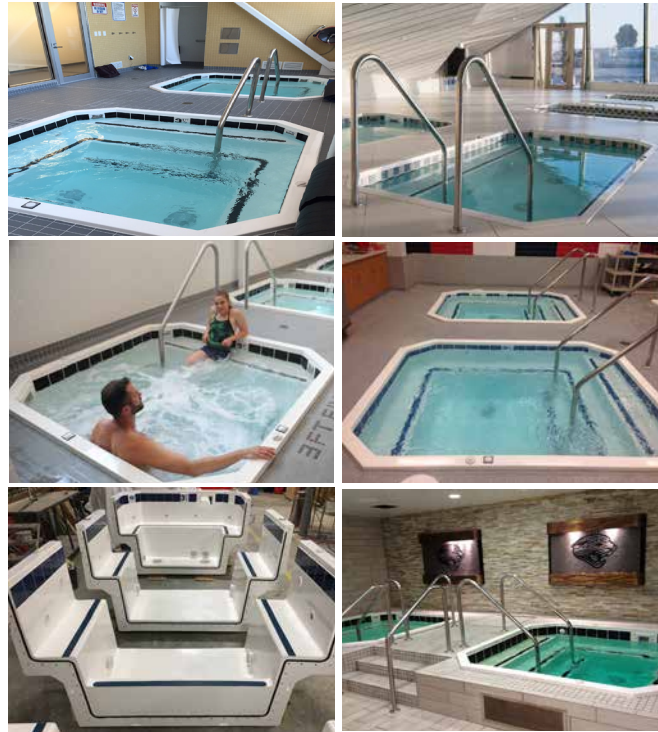




# Plunge Pools

## Benefits:

- Bottom drains for full draining
- Quick cleaning Gelcoat surface
- Variable seating options
- Solid fiberglass construction
- Superior temperature retention
- Insulated for lower utility costs
- Variable interior layouts
- Custom color and accent tiles
- Custom logo and team tiles



**Cold Plunge Pools** help minimize muscle inflammation to gain the beneficial outcomes of exercise with faster recovery times in between practices and less pain after workouts. The SwimEx chiller keeps water at a therapeutic 50°F (10°C).

**Hot Plunge Pools** help increase blood flow, flexibility, and loosen muscles to minimize muscle strain during practice for more productive sessions. They are ideal for soothing sore muscles. The SwimEx heater brings water to 104°F (40°C).

**Sectional Plunge Pools** are available in all SwimEx plunge pool models and designed specifically for easy access into tight spaces. They are ideal for existing facilities, post construction and pre-existing rooms.

## Sizing Options & Specifications

### Sizes

Small

Medium

Large

Extra Large

Custom

### Dimensions

7'9" x 7'9" x 56.5"

7'9" x 9' x 56.5"

7'9" x 12' x 56.5"

7'9" x 14' x 56.5"

Up to 46' Long

### Water Depth

3'6"

3'6"

3'6"

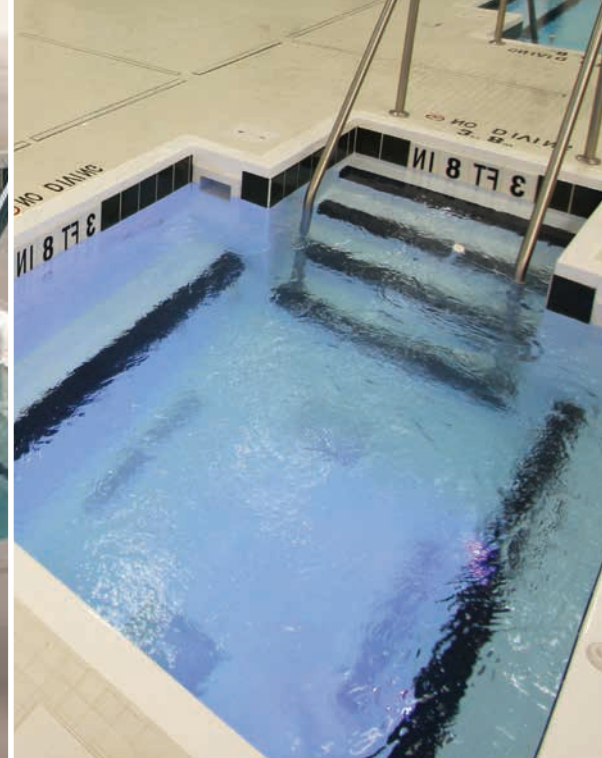
3'6"

3'6"













## Phases of Installation

# *expert help* every step of the way

### Getting Started

From your first inquiry through choosing options, design and installation, you get the best service in the industry. We can assist you during the planning and decision-making process, when you are ready to install, and after installation with yearly service and maintenance. Our field technicians will guide you and your contractors with space layouts, CAD drawings, technical information and installation details.

### Hassle-Free Installation

SwimEx pools can be installed indoors, outdoors, above ground, in-ground or partially in-ground. What's more, a SwimEx is free-standing and moveable; additional support is not required. Our one-piece seamless design means no assembly required, great for new construction and open installations. For easy access into existing space, choose to have the plunge pool delivered in sections and assembled on-site.



# client *testimonials*

“It’s a huge factor in why people come here. Out of 400 visits per month, aquatic rehab is sixty to seventy percent of our patients. Our usage has exceeded projections and we’re very busy – it’s a better investment than we had thought. Given our caseload, I’d say we’re on track to pay off the pool in half the time we projected.” – **Barb Engberg, PT, and Beth Bamesberger, PT | Live Well | Grand Island, NE**

“We selected SwimEx based on tradition and the success I know other athletic trainers and athletes have had with the pool. We looked at the competition, but all it had to offer was a treadmill. With SwimEx, I can get multiple depths, a variety of workstations – just a lot more.” – **Darryl Conway, ATC, Director of Sports Medicine, University of Maryland**

“We have had tremendous results in treating our athletes in the SwimEx pool. Not only has it helped speed the recovery of America’s injured athletes, it also offers tremendous benefits in athletic training. Many of our athletes run and swim against the current, which gives them an incredible workout.” – **Mr. Bob Beetan | Director of Sports Medicine | United States Olympic Committee**

“After we purchased it, they sent experts out to train us how to use it and made technology real to us as far as possibilities with rehab and physical conditioning. They gave us a bunch of ideas we hadn’t thought of before. Its use is limited only by our imagination. The color coded stations make it easy for my men’s soccer players with hip injuries to do plyometrics and for others to do explosive drill movements from different height platforms. Right now I’m using it to treat a basketball player with a herniated disc in a treatment I made up that I call ‘traction.’ I hook his feet under the hand rails and turn the current on, which pushes him away from the wall into a weightless stretch, supported by the water and a pair of water wings. So there’s no pressure on the disc and we can get some separation. I can’t do that on the table.” – **Jonathan Burch, Asst. Athletic Director | Sports Medicine | St. Louis University**

After researching aquatic therapy pools, the decision to select SwimEx was simple. Their pools require the least amount of maintenance in addition to offering the widest array of rehabilitation and conditioning options for our athletes. In addition, we were able to work with them on a custom appearance design allowing the pools to be a showpiece for our facility. We are very pleased with our purchase of SwimEx pools.” – **Bob Howard, ATC | Head Athletic Trainer | University of Connecticut**

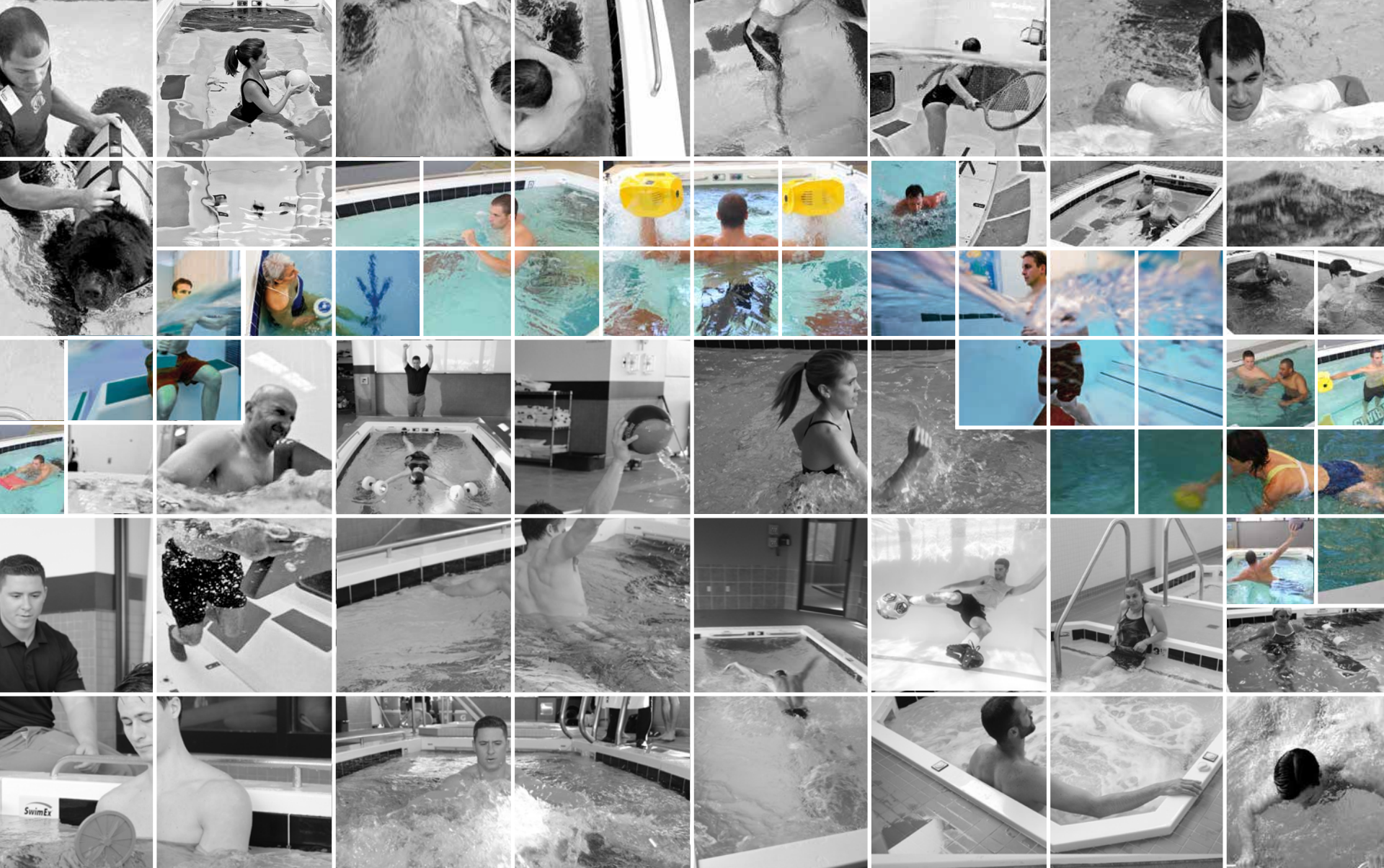
“SwimEx has played an extremely important role in my early recovery from a broken ankle! Before I could bear weight, I was able to build my muscles and stay in shape through the resistance from the underwater current...with the help of SwimEx and my wonderful physical therapist Preston Hall, I will be back playing volleyball more quickly than I thought to be possible!” – **Kristi (pictured right) | Patient at MountainTop PT | Park City Utah**

“The SwimEx allowed us to be a lot more progressive in Kristi’s treatment, which meant she could return to the team in time for volleyball season.” – **Preston Hall (pictured right) | PT Owner MountainTop PT | Park City Utah**









390 Airport Rd  
Fall River MA 02720

TELEPHONE  
508.646.1600

TOLL FREE  
800.877.7946

FACSIMILE  
508.675.0525

E-MAIL  
sales@swimex.com

WEBSITE  
www/swimex.com